

# Spider Identification Chart

## Armed deadly and dangerous

These spiders can be deadly or lead to severe illness



### Sydney Funnel-Web Spider

Male up to 25mm (long spinnerets).

Ground dwelling so watch for males active in summer and autumn. Venom is highly toxic. Wear shoes in the yard and gloves when gardening. Stand clear.

#### In case of bite

Apply a pressure bandage, immobilise and get to a hospital fast.

Treatment includes antivenom, admission to a critical care area and monitoring for 12–24 hours until all evidence of envenoming has resolved.



### Red-Back Spider

Female to 14mm, Male to 3mm.

Builds a web often found under outdoor furniture, logs and rubbish. Look first and wear gloves. Stay clear.

#### In case of bite

Pressure bandaging is contraindicated in Red-back spider bites and get to a hospital fast. Treatment may include antivenom depending on severity.



### White-Tail Spider

Female to 20mm, Male to 12mm.

Ground dwelling and active in the garden, under bark, rocks but will wander indoors. Can get caught in unattended bedding, clothes or shoes. Look first. Stand clear.

#### In case of bite

Bites cause pain, and some bites will leave a persistent red mark, associated itchiness and pain or lump lasting up to a week. Current evidence suggests that spider bites are very unlikely to cause necrotic lesions as commonly believed and such cases presenting as suspected spider bites should be thoroughly investigated for other causes. Play it safe and get to hospital.

## Poisonous and painful

These spiders can be dangerous, best to avoid contact



### Mouse spider

Male to 15mm.

Normally not aggressive, ground dwelling spider. Watch for wandering males, which will bite if provoked. Toxic venom and painful bite. Stand clear.

#### In case of bite

Pain or discomfort occurs in all spider bites. Rest and elevation. Local application of ice packs and lotions.

#### Simple analgesics and antihistamines.

In some patients, anaphylactic reactions may occur after insect bites, and these may be life threatening. Get to a hospital fast.



### Black House Spider

Female up to 18mm. Male up to 9mm.

Builds a web and seen commonly around doors, window frames, eaves and awnings. Timid but has painful bite, swelling and nausea. Use vacuum to remove and dispose of in plastic bag using gloves.



### Wolf Spider

Female up to 35mm. Male up to 20mm.

Not aggressive, ground dwelling and often found in the garden.

## Small risk of injury

These spiders can be play an active role in pest control



### Trap-Door Spider

Female up to 35mm. Male up to 23mm.

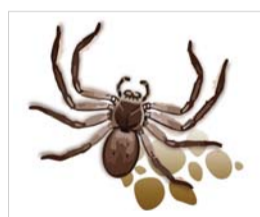
Not aggressive, ground dwelling, often mistaken for a funnel-web spider. Males often found looking for female company.



### Garden Orb-Weaving Spider

Female up to 30mm. Male up to 20mm.

Spins a sticky web in the garden and considered helpful.



### Huntsman Spider

Female up to 45mm.

Timid, ground dwelling spider often found around home and garden in search of prey and considered helpful. Looks worse than it is.



### St Andrews Cross Spider

Female up to 30mm. Male up to 5mm.

Spins a sticky web with white ribbon cross aligned with its legs and considered helpful.